

An Environmental Affair

Volume 15, Issue 12

December 2004

The City of Los Angeles Environmental Affairs Department was established in 1990 to advise the city on environmental issues and provide a centralized source of environmental information. The Environmental Affairs Department seeks to protect and enhance the environmental quality of life for residents, workers and visitors in the City of Los Angeles.

EAD Works to Expand the Urban Forest in Los Angeles

Urban forests are valuable resources that provide an array of benefits to communities. They soften hard urban landscapes by shading play areas, walkways, homes, parking lots, and streets. Trees and other greenery provide numerous environmental benefits including improving air quality, reducing stormwater runoff and flooding, reducing water pollution by removing pollutants from stormwater runoff, reducing energy needs and costs, and creating wildlife habitat. They also beautify neighborhoods and increase property values. The Human-Environment Research Laboratory of the University of Illinois at Urbana Champaign has reported that green spaces in urban environments can reduce stress, strengthen communities, and even reduce crime and violence in communities. For more on this, go to <http://www.herl.uiuc.edu>.



The Environmental Affairs Department has been working for over a decade to expand the urban forest in Los Angeles by obtaining state and federal grant monies to plant trees. The Department has brought in over \$4,000,000 to plant over 21,000 trees. Two grants currently are being com-

(Urban Forest...continued on page 7)

Inside This Issue:

Arbor Day	2
Recycle Your Christmas Tree	2
Brownfields Grants	3
Grants	4
Calendar of Events	5-7

EPA's P3 Challenge

Each year, the US Environmental Protection Agency (US EPA) promotes research and develops sustainable designs through the People, Prosperity and the Planet (P3) competition. Sustainable development allows communities to grow economically while preserving natural resources for future generations. Students will design solutions that both benefit the environment and are not prohibitively expensive.

Many businesses already are recognizing that it is to their benefit to protect the ecosystems that supply the sources of their materials and markets. Additionally, the less hazardous waste produced, the less time and resources the company expends on clean-up. A number of computer and automobile manufacturers are using less toxic materials in manufacturing, creating products that use less energy and have longer life spans, and planning for parts to be reused or recycled.



The P3 national student design competition was launched in January 2004. More than 40 partners in

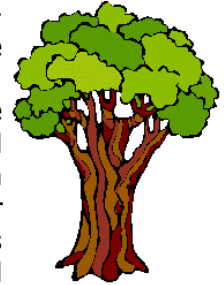
(P3 Challenge Continued on page 7)

An Environmental Affair is produced monthly by the EAD to inform residents about environmental issues and activities in Los Angeles. For questions, or to update or cancel your free subscription, call the Environmental Information Center Hotline at (213) 978-0888, send an e-mail to: eadinfo@mailbox.lacity.org, or visit our website at <http://www.lacity.org/ead>. TDD (213) 978-0899. You can also reach us by fax at (213) 978-0893. As a covered entity under Title II of the Americans with Disabilities Act, the City of Los Angeles does not discriminate on the basis of disability and upon request, will provide reasonable accommodation to ensure equal access to its programs, services and activities.

Printed on recycled paper.
PLEASE POST

National Arbor Day Foundation Tree Planting Kit

The National Arbor Day Foundation has a special offer for volunteers! Thanks to support from Toyota, they developed a complete kit to help make tree planting events successful. The kit is called the Tree Planting Resource Kit For Volunteers, and it is available by calling (888) 448-7337 or visiting www.arborday.org. The kit includes an 80-page leadership guide with useful checklists, a packet of reproducibles ranging from budget-planning sheets to handouts on proper planting, a Celebrate Arbor Day Guidebook that is full of great ideas and background information, and a 20-minute video designed to motivate and train volunteers in proper tree planting techniques.



Whether you're planning your first tree-planting event or are a veteran organizer who wants fresh ideas, you'll find helpful tips and advice. Also, the Tree Planting Resource Kit for Volunteers comes in a handy, Velcro-closed container, just right for easy reference, year after year.

Call the number provided or visit the online website for the Foundation for your copy.

Recycle Your Christmas Tree!

Please recycle your tree by cutting and placing it in your green yard trimmings container. If you are unable to use your green container, you also may recycle your tree by bringing it to one of the drop-off sites listed below. Before recycling your tree, please remove all ornaments, decorations, tinsel and stand. Trees left at curbs or in alleys and streets cannot be collected. Per Los Angeles Municipal Code 57.21.06, it is illegal to leave trees at the curb or on street due to extreme fire hazard. For more information call (800) 773-2489.



En Español - Por favor recicle su árbol de Navidad con cortándolo y poniéndolo en el bote verde. Si por alguna razón no puede ponerlo en su bote verde, también puede llevándolo alguno de los sitios de reciclamiento. Antes de reciclar su árbol, favor de quitarle todas las decoraciones y el estante. Los árboles dejados en las banquetas y callejones no serán recogidos. El Código Municipal 57.21.06 prohíbe que se tiren árboles en las calles debido o en las banquetas al peligro de incendio.

LOS ANGELES ZOO
At Griffith Park, Junction Of
Golden State (5), & Ventura (134) Frwys

ARLETA
Branford Park
13300 Branford Street

BOYLE HEIGHTS
Hollenbeck Recreation Center
415 South St. Louis Steet

CHATSWORTH
Chatsworth Park South
22360 Devonshire Street

CRENSHAW
Rancho Cienega Recreation Center—5001 Rodeo Road

ENCINO
Balboa Sports Center
17015 Burbank Boulevard

HARBOR CITY
Harbor Regional Park
25820 Vermont Avenue

HIGHLAND PARK
Highland Park Senior Citizen Center—6200 York
Boulevard

HOLLYWOOD
Hollywood Bowl
2301 North Highland Boulevard

RANCHO PARK
Cheviot Hills Recreation Center— 2551 Motor Avenue

SOUTH LOS ANGELES
South Park
345 East 51st Street

SOUTH LOS ANGELES
Algin Sutton Recreation Center—8800 South Hoover
Street

SUNLAND
Sunland Park
8651 Foothill Boulevard

SYLMAR
Sylmar Park
8651 Foothill Boulevard

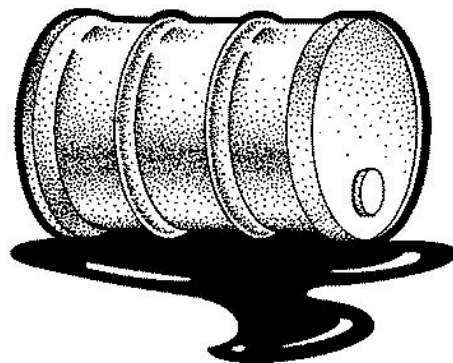
VENICE
Oakwood Recreation Center
767 California Avenue

WESTCHESTER
Westchester Municipal Building
7166 West Manchester Avenue

City of Los Angeles to Apply for EPA Brownfields Grants

Brownfields are real property, the expansion, redevelopment, or reuse of which may be complicated by the presence or potential presence of a hazardous substance, pollutant, or contaminant.

The City of Los Angeles Brownfields Program is a collaborative interdepartmental effort comprised of the Environmental Affairs Department (EAD), Mayor's Office of Economic Development (MOED), Community Redevelopment Agency (CRA/LA), Community Development Department (CDD), Office of the Chief Legislative Analyst (CLA) and the City Attorney's Office. EAD is the Chair of the Brownfields Program. The Program provides professional expertise and funding to assist in removing physical and economic blight that cannot be alleviated by government or private sector action alone, and reinforces overall City efforts to engender economic development and private sector investments in vacant and under-utilized areas of the City. The primary goal of the Brownfields Program is to develop strategies that enable the redevelopment of brownfields throughout Los Angeles, particularly those in disadvantaged communities, and to incorporate these strategies into the City's normal economic development, housing, and community revitalization processes.



It is estimated that more than 600,000 brownfields exist in the U.S. Most of these sites were once used for industrial, manufacturing, or commercial uses and now lay abandoned or underused due to the suspicion of environmental contamination from the former operations conducted on the sites. Unknown environmental liabilities prevent communities, developers, and investors from restoring these properties to productive use and revitalizing impacted neighborhoods. When agricultural and green spaces are developed for residential, commercial or industrial uses, infrastructure such as roads and sewers must be developed. That redundant infrastructure wastes scarce tax dollars and adds to the burden on California's environment. Redeveloping these brownfields properties optimizes the use of existing infrastructure and protects our precious resources. Furthermore, cleaning up and reinvesting in these properties increases local tax bases, facilitates job growth, takes development pressures off of undeveloped, open land, and both improves and protects the environment.

Through the passage of the Small Business Liability Relief and Brownfields Revitalization Act in January 2002, EPA's assistance role was expanded by providing new tools to the public and private sectors to promote sustainable brownfields cleanup and reuse. One of these new tools is a series of grants that provide up to \$200,000 to investigate properties to determine if environmental challenges are present and an additional \$200,000 to remediate the parcels if environmental threats are established. The City's Brownfields Program is planning to take advantage of this grant opportunity and apply for several grants to assist neighborhoods throughout the City.



The City of Los Angeles has been successful with the revitalization of brownfields, such as Wilmington Industrial Park (seen here).

The EPA Brownfields Grants will be competitively evaluated on a national scale. The awards will be announced in June 2005 with the funding becoming available in late September 2005. For more information on the grant application process or about the targeted areas for assistance, please feel free to contact Noemi Emeric of the City's Brownfields Program at

(213) 978-0863 or nemeric@mailbox.lacity.org. Information on the program also can be obtained by visiting www.lacity.org/ead/labf.

\$ \$ \$ FUNDING OPPORTUNITIES \$ \$ \$
Visit <http://www.lacity.org/ead> for more grant opportunities.

California Coastal Commission Whale Tail Grants

The Whale Tail Grants Program distributes funds from sales of the Whale Tail License Plate. The grants support programs that teach California's children and the general public to value and take action to improve the health of the state's marine and coastal resources. This grants program focuses on reaching communities that are currently poorly served in terms of marine and coastal education. For beach operation and maintenance projects, the applicant must be a non-profit organization or local governmental agency. Applications must be postmarked by **December 10, 2004**. For more information, visit the Coastal Commission's Whale Tale Grants webpage at www.coastal.ca.gov/publiced/pendx.html; e-mail for information at COAST4U@coastal.ca.gov; call the Coastal Commission offices at (800) COAST 4U, or write to:

Whale Tail Grants Program
California Coastal Commission
45 Fremont St., Suite 2000
San Francisco, CA 94105.

Building State, Territorial, and Tribal Capacity To Address Children's Environmental Health: Environmental Triggers of Childhood Asthma

U.S. Environmental Protection Agency (EPA) is calling for projects that will build state, territorial, and tribal capacity to address the environmental triggers of childhood asthma. This solicitation focuses on projects that equip environment and health departments/agencies, and social service agencies where indicated, of states, territories and tribes as partners or state/territorial/tribal or regional asthma coalitions with substantive government involvement, to achieve measurable environmental and public health results by identifying and reducing environmental risks to protect and improve the environmental health of children impacted by asthma. For more information, visit www.epa.gov/fedrgstr/EPA-AIR/2004/September/Day-27/a21580.htm. Eligible applicants are State governments, Public and State controlled institutions of higher education, Native American tribal governments, nonprofits having a 501(c)(3) status with the IRS, and other institutions of higher education. For more information, contact Bettina Fletcher, Project Officer, at (202) 564-2646, by fax at (202) 564-2733, or e-mail fletcher.bettina@epa.gov. Proposals for projects are due by **December 29,**

2004.

Toyota Tapestry Grants for Science Teachers

A partnership of Toyota Motor Sales, U.S.A., Inc. and the National Science Teachers Association, the Toyota Tapestry program offers grants to K-12 science teachers for innovative projects that enhance science education in the school and/or school district. Toyota Tapestry grants will be awarded in three categories: Environmental Science Education, Physical Science Application, and Literacy & Science Education. For more information, visit <http://www.nsta.org/programs/tapestry/>. Applications are due **January 1, 2005**.

Fifth Graders: Celebrate Arbor Day 2005!

"Trees are Terrific... and Energy Wise!" is the theme for this year's contest. Free curriculum kits explaining the contest are available to fifth grade teachers and parents. Each school or group selects one poster to submit to the statewide contest. One winner will be forwarded to the National Arbor Day Foundation for final judging. That winner receives a \$1,000 savings bond and other prizes. For more information and to request a kit, contact Kay Antunez at (916)653-7958, e-mail to Kay.Antunez@fire.ca.gov, or visit <http://www.arborday.org>. The deadline to enter is **March 1, 2005**.

2005 National Network for Environmental Management Studies Fellowship Program

In recognition of the growing interest in environmental issues and careers, the United States Environmental Protection Agency (EPA) established the National Network for Environmental Management Studies (NNEMS) Fellowship Program in 1986 to encourage students to pursue environmental careers. The NNEMS program is a comprehensive fellowship program that provides students an opportunity to participate in a fellowship project that is directly related to their field of study. For more information on this program, visit <http://www.epa.gov/enviroed/NNEMS/pdf/solicitation2005.pdf>, or contact Sheri Jojokian, Project Officer with the EPA, by telephone at (202) 564-0452, or by e-mail at jojokian.sheri@epa.gov. The application deadline is **January 15, 2005**.

DECEMBER CALENDAR OF EVENTS

EACH MONTH:

Smart Gardening Workshops

The Los Angeles Countywide Yard Waste Program hosts Smart Gardening workshops year-round. Topics covered include backyard and worm composting, grass recycling, and water-wise gardening. For more information, call (888) CLEAN-LA or visit www.smartgardening.com. For more information call the Bureau of Sanitation at (213) 473-8228.

Down-by-the-River Walks

Friends of the Los Angeles River and the Sierra Club are sponsoring monthly walks along the banks of the LA River. Join them at 4:30 pm on the third Sunday of each month for an informal, leisurely, hour-long walk. The walk is canceled if it rains. For more information, visit the FoLAR website, www.folar.org, or call Joe Linton at (213) 381-3570.



Japanese Garden Tours

Docent-led tours of the Japanese Gardens at the D.C. Tillman Water Reclamation Plant in Van Nuys are offered during the day on Monday through Thursday and again on Saturday. Reservations are required. For more information or to make reservations call (818) 756-8166.

Madrona Marsh Tyke Hike for Preschool Children and their favorite adult every first Thursday of the month. The hike takes place Thursdays at 10 am. Suggested donation of \$5. Hikers meet at the gate half-way between Sepulveda and Plaza del Amo on Madrona Avenue in

Torrance. For more information, call the Friends of Madrona Marsh at (310) 32MARSH or the Nature Center at (310) 782-3989.



Hyperion Wastewater Treatment Plant Tours

Free public tours of the facility (located near El Segundo in Los Angeles) are available Tuesday, Wednesday and Thursday starting at 9 am. For more information, please contact Felcie Kidd at (310) 648-5363 for details or to schedule a tour.

Afternoons in the Lab

Cabrillo Marine Aquarium's education staff and volunteers are available every Wednesday from 3-5 pm to answer questions and involve students of all ages in exploring local marine life in the hands-on Discovery SEA Lab. Activities cover a wide range of scientific fun. The science education afternoon is free and opens with a different theme each week. Groups should make reservations. For more information, call (310) 548-7562 or visit www.cabrilloaq.org.

THIS MONTH:

(EAD recommends contacting event sponsor prior to event)

All Month Long

The Ice Age Garden at the La Brea Tar Pits and Page Museum is free with admission. Explore what Los Angeles looked like 10,000 to 40,000 years ago. For more information call (323) 934-7849.



Reindeer Romp! Come visit the

The EAD website, located at www.lacity.org/EAD, contains updated information on this month's events. To ensure your event is included in our monthly newsletter, submit information to the editor by the 10th of each month prior to publication. After the 10th, events can be entered into our website calendar only.

The EAD reserves the right to edit all submittals and does not necessarily endorse the events listed. All events are subject to change, so call listed event contacts to verify information.

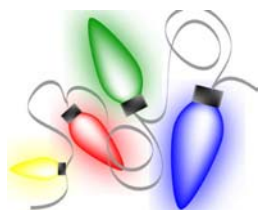
antlered visitors who have taken up residence in the L.A. Zoo's Eucalyptus Grove. Teach your little ones about these European cousins of the North American caribou. There will also be fun craft activities free of charge with park admission. For more information, please contact the Zoo at (323) 644-6400 or visit www.lazoo.org.

Downtown on Ice Holiday themed ice skating on a 60' x 80' rink at Pershing Square. The Square is located at 530 South Olive Street between 5th and 6th Streets in Downtown Los Angeles. \$6 admission for an hour-long skating session and \$2 for skating rental. Sponsored by the City of Los Angeles Department of Parks and Recreation. For more information, call the Department at (888) 527-2757 or visit www.laparks.org. Skating ends January 19, 2005.



Griffith Park Lights The annual holiday lighting of Crystal

Springs Road in Griffith Park runs through December 26th.



The Light Festival includes a drive or a walk through the tunnel of lights, lighted representations of downtown Los Angeles, the new Staples Center, the Hollywood Sign, the L.A. Zoo, and much more. The Light Festival will run daily through December 26 from 5 pm to 10 pm. Sponsored by the City of Los Angeles Department of Recreation and Parks. For more information call (888) 527-2757.

Sat, Dec 4

Los Angeles Harbor Holiday Afloat Parade in Los Angeles Harbor, San Pedro and Wilmington. The annual parade of lighted and decorated boats runs from 6 to 8 p.m. with public viewing areas along the Main Channel including Banning's Landing, Los Angeles Maritime Museum, and Ports O'Call in San Pedro. Sponsored by the City of Los Angeles Cultural Affairs Department and the Los Angeles Harbor Holiday Afloat Committee; for more information call (310) 549-8111. Free.



Meet the Iguana at the Los Angeles Natural History Museum from 10 to 11 a.m. Learn about large lizards, create lizard crafts and

meet Cecil, the museum's large iguana. Free with museum admission. For more information call (213) 763-3466 or visit www.nhm.org.

Sat and Sun, Dec 4-5

Annual Victorian Christmas celebration at the Banning Residence Museum, 401 East M Street, in Wilmington. Decorations, homemade ornaments, entertainment, caroling, story telling, and a horse-drawn trolley for the whole family. Brought to you by the City of Los Angeles Department of Recreation and Parks. The event runs 11 am to 4 pm. For more information call (888) 527-2757 or visit www.laparks.org

Civil War Christmas celebration at the drum barracks museum, 1052 Banning Boulevard in Wilmington. Rustic ornaments, music, popcorn, and entertainment for all. Free, 11 a.m. to 4 p.m. sponsored by the City of Los Angeles Department of Recreation and Parks, for more information call (888) 527-2757 or visit www.laparks.org.

Sun, Dec 5

Hanukkah the Festival of Lights at the Skirball Cultural Center. Includes crafts, music, performances, storytelling, dance and games. Admission is \$8/\$6 seniors and students. Free for Skirball members and children under 12. For more information, call (310) 440-4500.



Sat, Dec 11

Visit Santa and Mrs. Claus in

San Pedro. The City of Los Angeles Department of Recreation and Parks brings you entertainment, food, and gifts



for the whole family. Point Fermin Park, 807 Paseo Del Mar. For more information call (888) 527-2757 or visit www.laparks.org.

Sun, Dec 12

Navidad en la Calle Ocho with four stages of entertainment, toys, clowns and rides. The Edgar N. Palacios Children's Foundation presents this free event from 10:00 a.m. to 10:00 p.m. at 8th Street and Normandie Avenue. For more information call (213) 388-8291 or visit www.calleochola.com.

Wed, Dec 15

23rd Annual Black Doll Show, free at the William Grant Still Arts Center, 2520 South West View Street. Brought to you by the Friends of William Grant Still with dolls from Latin, Caribbean, African, and Black American cultures. For more information call (323) 857-7000 or visit www.fowgs.org.



Wed Dec 15 thru Fri Dec 24

Los Posadas at Spiraling Orchard Artpark, 1250 Court Street. Vecinos de Spiraling Orchard and ARTScorpsLA present this community procession around the Temple-Beaudry neighborhood with singing, puppets, piñatas, and champurrado. Free to all. For more information call (213) 617-3877 or visit www.artscorpsla.org.

Thurs, Dec 16 to Fri, Dec 24 or visit www.cityofla.org/elp.

El Pueblo holiday celebration. A Posadas presentation complete

with signing, candlelight procesion, and breaking of a piñata. Free, brought to you by the City of Los Angeles and the Olvera dance and seasonally themed Street Merchants. For more information call (213) 625-5045, cultural spectrum. Brought to

Fri, Dec 24

Holiday Celebration at the Music Center. A free presentation with choirs, instrumental groups, programming from across the visit www.lacountyarts.org.



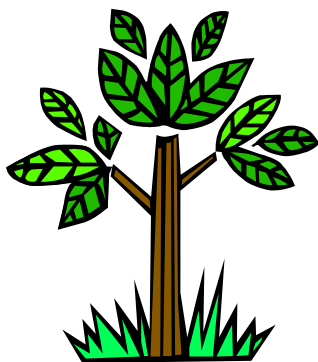
you by the Los Angeles County Arts Commission. Parking under the music center at 135 North Grand is free for this night only. For more information call (213) 972-3099 or visit www.lacountyarts.org.

(Urban Forest...Continued from page 1)

pleted. One, GreenWays to Schools, is planting over 900 trees along streets in the vicinity of schools throughout Los Angeles. The other, LA Green Corridors, is planting 2,600 trees along major transportation routes throughout the City. EAD is pleased to announce that it was notified in October that an additional \$250,000 has been awarded to the department to continue the greening program by planting over 1,000 trees in neighborhoods adjacent heavily used highways throughout Los Angeles.

EAD has been very active in soliciting community input on all projects. Staff works with Neighborhood Councils, Business Improvement Districts, Council Offices, community groups, and concerned residents to identify planting locations, select tree species, and acquire permissions to plant from residents and business and property owners. Staff also works with residents and business owners to ensure that the trees are properly watered during the first few years while the trees become established.

EAD believes that this community involvement is vital to the success of the project.



The trees planted by EAD are in the easements along streets and are known as "street trees." The Bureau of Street Services, Street Tree Division, is responsible for these trees and will provide long-term maintenance. EAD, therefore, also works with the Street Tree Division to ensure that their guidelines are followed for all trees that are planted.

If you are interested in having trees planted along streets in your neighborhood, please contact EAD at (213) 978-0862 to see how your community fits into our current projects.. With your help, we can bring the benefits of the Los Angeles urban forest to your neighborhood.

(P3 Challenge Continued from page 1)

the federal government, industry, and scientific and professional societies provide support. Project focus areas include: green buildings and sustainable construction materials, biodiesel production and use, drinking water quality and supply, alternative energy sources and fuel cells, urban redevelopment and green chemistry.

In May 2005, all teams will be invited to bring their designs to Washington, D.C., to compete for the P3 Award. The National Academy of Engineering will convene a panel of judges for the competition. Winners will be eligible for additional funding to implement their project in the field and move the design to the marketplace.



EPA is accepting applications from student teams for the 2005 P3 competition.

The deadline for receipt of applications is **January 27, 2005**. A list of P3 national student design competition teams is available at <http://es.epa.gov/ncer/p3/projects/index.html>. More information about the awards and the 2005 competition can be found at <http://www.epa.gov/P3>.



HOTLINE CONNECTION

The Environmental Information Center (EIC) serves as a referral source to the community. Our hotline connection offers a list of the most frequently requested numbers. If the number you need is not listed, please contact the EIC at **(213) 978-0888**, or toll-free in Los Angeles only at **(800) 439-4666**. You can also visit our website at <http://www.lacity.org/ead> and click on *Environmental Information Center*.

Air Quality

Calidad del aire
South Coast Air Quality Management District
(800) 288-7664

Asbestos

Asbestos
Environmental Hygiene
(626) 430-5440

Bulky Item Pick-up

Recogida de articulos grandes
L.A. City Bureau of Sanitation
(800) 773-2489

Hazardous Waste Disposal

Desembolso de materiales peligrosos
L.A. County Dept. of Public Works
(888) 253-2652
L.A. City Bureau of Sanitation
(800) 988-6942

Housing and Building Complaints

Las quejas del construccion y albergar
Housing Code Enforcement
(213) 367-9411

Illegal Storm Drain Dumping

Depositos en los drenajes de desagües
Stormwater Management
(800) 974-9794

Indoor Air or Mold Concerns

Aire interior ó preocupaciones de moho
Environmental Hygiene
(626) 430-5440

Lead Poisoning

Veneno del plomo
National Lead Information Center
(800) 424-5323

Leaf Blowers

Sopladores de hojas
Leaf Blower Complaint Line
(800) 996-2489

Mosquitoes

Infestaciones de mosquitos
L.A. West Mosquito Abatement
(310) 915-7370

Recycling

Reciclaje
City of L.A. Public Works Dept.
(800) 773-2489

Smoking Violations

Infracciones de fumar
Office of the City Attorney
(888) 333-0730

The City of Los Angeles
Environmental Affairs Department
200 N. Spring Street, Suite 2005
Los Angeles, CA 90012

Presorted
First Class Mail
U.S. Postage Paid
Los Angeles, CA
Permit No. 12932